



**Test Report**

**No.:** SHTY111100017690

**Date:** Nov 08, 2011

**Page 1 of 3**

SHANGHAI BAISAN STATIONERY CO., LTD  
#1017 HANGYUAN RD., PUDONG DISTRICT, SHANGHAI, 2013.6, CHINA

The following samples were submitted and identified by/on behalf of the client as:

Sample Description : RULER

Detail of Sample : PLASTIC RULER

Sample Quantity : 3 PCS  
 SGS Ref No. : SHHG1111034255SD  
 Packaging Provided : NO  
 Instruction Manual/Sheet : NO  
 Labeled Age Grading : NOT STATED  
 Requested Age Grading : 3+  
 Age Group Applied in Testing : 3+ YEARS  
 Sample Receiving Date : NOV 01, 2011  
 Further Information Date : NOV 03, 2011  
 Testing Period : NOV 01, 2011 TO NOV 08, 2011

Test Requested

Result

This is not a toy, the EN 71 standard was applied as per client request. There may be additional hazards and labeling requirements that are not covered by this standard :-

EN71 Part 1:2011– Mechanical and Physical Properties	<u>Pass</u>
EN71 Part 2:2011– Flammability	<u>Pass</u>
EN71 Part 3:1994 + A1:2000 + AC:2002 – Migration of Certain Elements(As per client's request, only test the specific material selected by client)	<u>Pass</u>

\*\*\*\*\* FOR FURTHER DETAILS, PLEASE REFER TO THE FOLLOWING PAGE(S) \*\*\*\*\*

Signed for and on behalf of  
SGS-CSTC Ltd.

Wallace Lui  
Senior Technical Manager, Asia

This document is issued by the Company subject to its General Conditions of Service printed overleaf, available on request or accessible at [http://www.sgs.com/terms\\_and\\_conditions.htm](http://www.sgs.com/terms_and_conditions.htm) and for electronic format documents, subject to Terms and Conditions for Electronic Documents at [www.sgs.com/terms\\_e-document.htm](http://www.sgs.com/terms_e-document.htm). Attention is drawn to the limitation of liability, indemnification and jurisdiction issues defined therein. Any holder of this document is advised that information contained hereon reflects the Company's findings at the time of its intervention only and within the limits of Client's instructions, if any. The Company's sole responsibility is to its Client and this document does not exonerate parties to a transaction from exercising all their rights and obligations under the transaction documents. This document cannot be reproduced except in full, without prior written approval of the Company. Any unauthorized alteration, forgery or falsification of the content or appearance of this document is unlawful and offenders may be prosecuted to the fullest extent of the law. Unless otherwise stated the results shown in this test report refer only to the sample(s) tested and such sample(s) are retained for 30 days only.

Results :

European Standard on Safety of Toys

**- Mechanical and Physical Properties**

AS SPECIFIED IN EUROPEAN STANDARD ON SAFETY OF TOYS - EN 71 Part 1:2011

<u>Clause</u>	<u>Description</u>	<u>Result</u>
4	General requirements	
4.1	Material cleanliness	<u>Pass</u>
4.7	Edges	<u>Pass</u>
4.8	Points and Metallic Wires	<u>Pass</u>
5	Toys intended for children under 36 months	<u>Pass</u>
7	Warnings, markings and instructions for use	
7.2	Toys not intended for children under 36months	<u>N/A</u>

N/A = Not applicable

**- Flammability of Toys**

AS SPECIFIED IN EUROPEAN STANDARD ON SAFETY OF TOYS EN71 PART 2: 2011

<u>Clause</u>	<u>Description</u>	<u>Result</u>
4.1	General requirements	<u>Pass</u>

**- Migration of Certain Elements**

Test Method : With reference to EN 71 Part 3:1994 + A1:2000 + AC: 2002, analysis was performed by ICP-OES

<u>Test Item(s)</u>	<u>Limit</u>	<u>Unit</u>	<u>MDL</u>	<u>001</u>
Soluble Lead (Pb)	90	mg/kg	5	ND
Soluble Antimony (Sb)	60	mg/kg	5	ND
Soluble Arsenic (As)	25	mg/kg	5	ND
Soluble Barium (Ba)	1,000	mg/kg	10	ND
Soluble Cadmium (Cd)	75	mg/kg	5	ND
Soluble Chromium (Cr)	60	mg/kg	5	ND
Soluble Mercury (Hg)	60	mg/kg	5	ND
Soluble Selenium (Se)	500	mg/kg	10	ND

**Notes :**

(1) Results shown are of the adjusted analytical results.

This document is issued by the Company subject to its General Conditions of Service printed overleaf, available on request or accessible at [http://www.sgs.com/terms\\_and\\_conditions.htm](http://www.sgs.com/terms_and_conditions.htm) and for electronic format documents, subject to Terms and Conditions for Electronic Documents at [www.sgs.com/terms\\_e-document.htm](http://www.sgs.com/terms_e-document.htm). Attention is drawn to the limitation of liability, indemnification and jurisdiction issues defined therein. Any holder of this document is advised that information contained hereon reflects the Company's findings at the time of its intervention only and within the limits of Client's instructions, if any. The Company's sole responsibility is to its Client and this document does not exonerate parties to a transaction from exercising all their rights and obligations under the transaction documents. This document cannot be reproduced except in full, without prior written approval of the Company. Any unauthorized alteration, forgery or falsification of the content or appearance of this document is unlawful and offenders may be prosecuted to the fullest extent of the law. Unless otherwise stated the results shown in this test report refer only to the sample(s) tested and such sample(s) are retained for 30 days only.

Test Part Description :

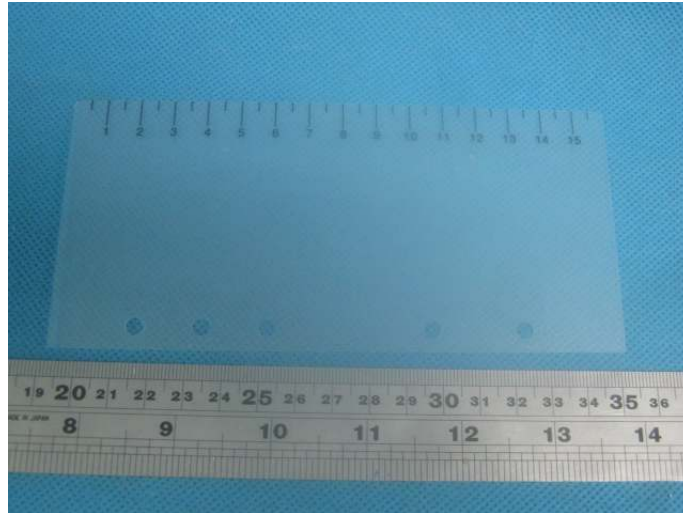
Specimen No.	SGS Sample ID	Description
1	SHA11-175294.001	Translucent soft plastic

Remarks :

- (1) 1 mg/kg = 1 ppm = 0.0001%
- (2) MDL = Method Detection Limit
- (3) ND = Not Detected ( < MDL )
- (4) "-" = Not Regulated

N.B. : - Only applicable clauses were shown.

**Sample Photo:**



SGS authenticate the photo on original report only

\*\*\* End of Report \*\*\*

This document is issued by the Company subject to its General Conditions of Service printed overleaf, available on request or accessible at [http://www.sgs.com/terms\\_and\\_conditions.htm](http://www.sgs.com/terms_and_conditions.htm) and for electronic format documents, subject to Terms and Conditions for Electronic Documents at [www.sgs.com/terms\\_e-document.htm](http://www.sgs.com/terms_e-document.htm). Attention is drawn to the limitation of liability, indemnification and jurisdiction issues defined therein. Any holder of this document is advised that information contained hereon reflects the Company's findings at the time of its intervention only and within the limits of Client's instructions, if any. The Company's sole responsibility is to its Client and this document does not exonerate parties to a transaction from exercising all their rights and obligations under the transaction documents. This document cannot be reproduced except in full, without prior written approval of the Company. Any unauthorized alteration, forgery or falsification of the content or appearance of this document is unlawful and offenders may be prosecuted to the fullest extent of the law. Unless otherwise stated the results shown in this test report refer only to the sample(s) tested and such sample(s) are retained for 30 days only.